

Art Companion

to

‘To Recall Forgotten Gods from their Twilight’:
J. R. R. Tolkien’s ‘The Name Nodens’

by John D. Rateliff

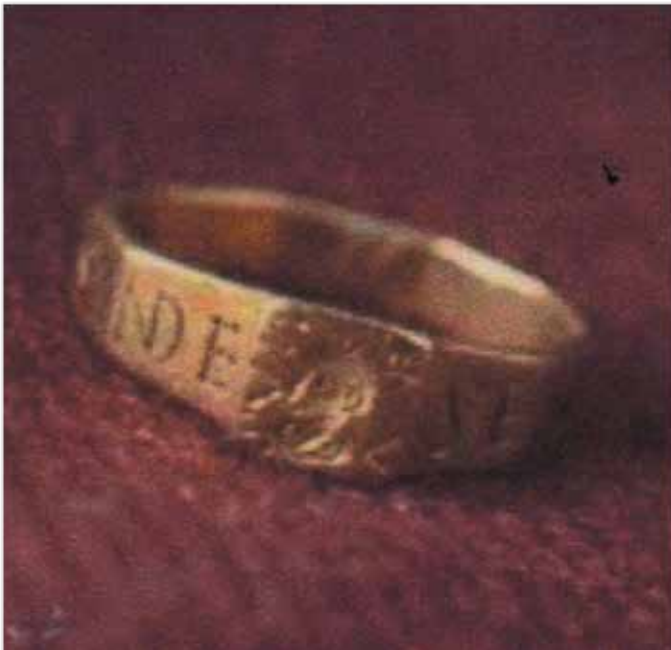
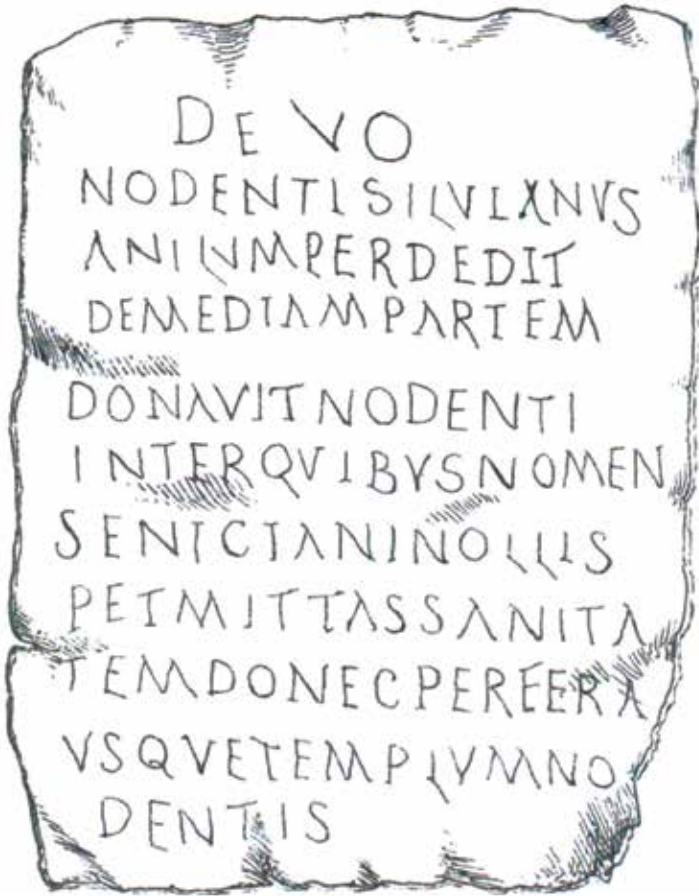


Figure 1: The Vyne Ring (AKA The Ring of Silvianus).
SENICIANE VIVAS IIN DE [sic for 'IN DEO']: "Senicianus lives in God"

Figure 2: The Curse Tablet



DEVO
NODENTI SILVIANVS
ANILVM PERDEDIT
DEMEDIAM PARTEM

DONAVIT NODENTI
INTER QVIBVS NOMEN
SEICIANI NOLLIS
PETMITTAS SANITA-
TEM DONEC PEREERA
VSQVE TEMPLVM NO-
DENTIS

To the god Nodens. Silvianus has lost a ring. He has given the half part to Nodens. Allow health to none amongst [those] who bear the name of Senicianus until he brings [it] even to the temple of Nodens.

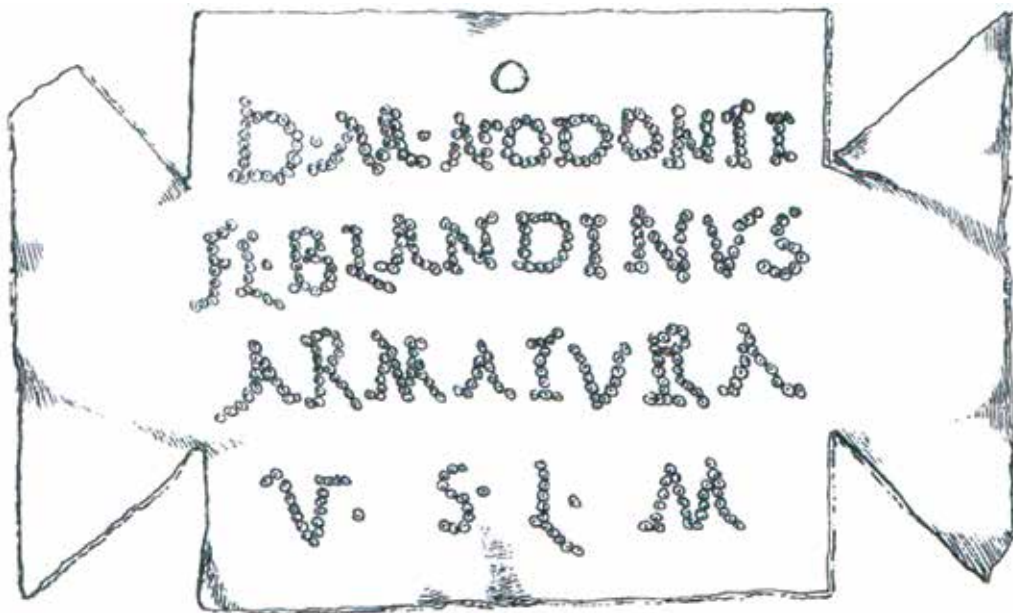


Figure 3: The Second Tablet
DM NODONTI FLAVIVS BLANDINVS ARMATVRA V S L M

To the great god Nodons, Flavius Blandinus the drill-instructor, willingly and deservedly fulfills his vow.



Figure 4: The Third Tablet

PECTILLVS
VOTVM QVOD
PROMISSIT
DEO NVDENTE
M DEDIT

*Pectillus dedicates this votive offering which he had promised to **the great god Nudens**.*



Figure 5: The Lost Mosaic

D . . . TILVIVS SENILIS PR REL EX STIPIBVS POSSVII
 O . . . ANTE VICTORINO INTER . . I . . E

King's Reconstruction:

Deo Maximo Iterum FLAVIVS SENILIS PRAeses RELigionis EX STIPIBVS POSSVIT
 OpituLANTE VICTORINO INTERpret LaTINE

King's Translation:

To the greatest God, for the second time, Flavius Senilis, Head of the Religion, has erected this, from voluntary contributions, the Director of the works being Victorinus, interpreter for the Latin tongue. (Bathurst/King 25)

Collingwood's Reconstruction:

Deo Nodenti Titus FLAVIVS SENILIS, PRAepositus RELiquationi, EX STIPIBUS POSSUIT;
 Opus curANTE VICTORINO INTERpretE

Collingwood's Translation:

To the god Nodens, Titus Flavius Senilis, officer in charge of the supply-depot of the fleet, laid this pavement out of money offerings; the work being in charge of Victorinus, interpreter on the Governor's staff.

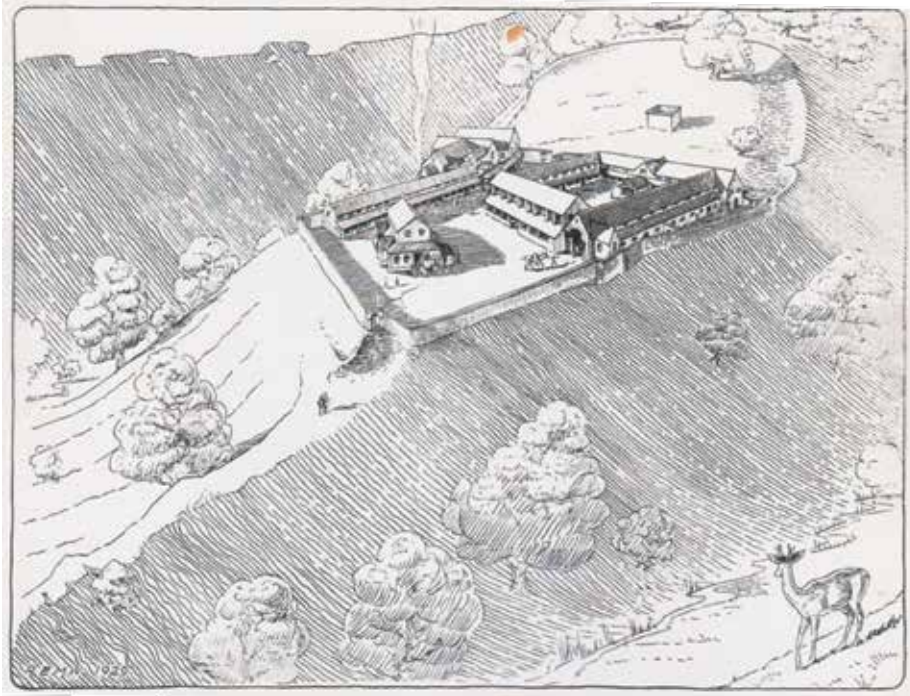


Figure 6: Prospect (as imagined by R. E. M. Wheeler)

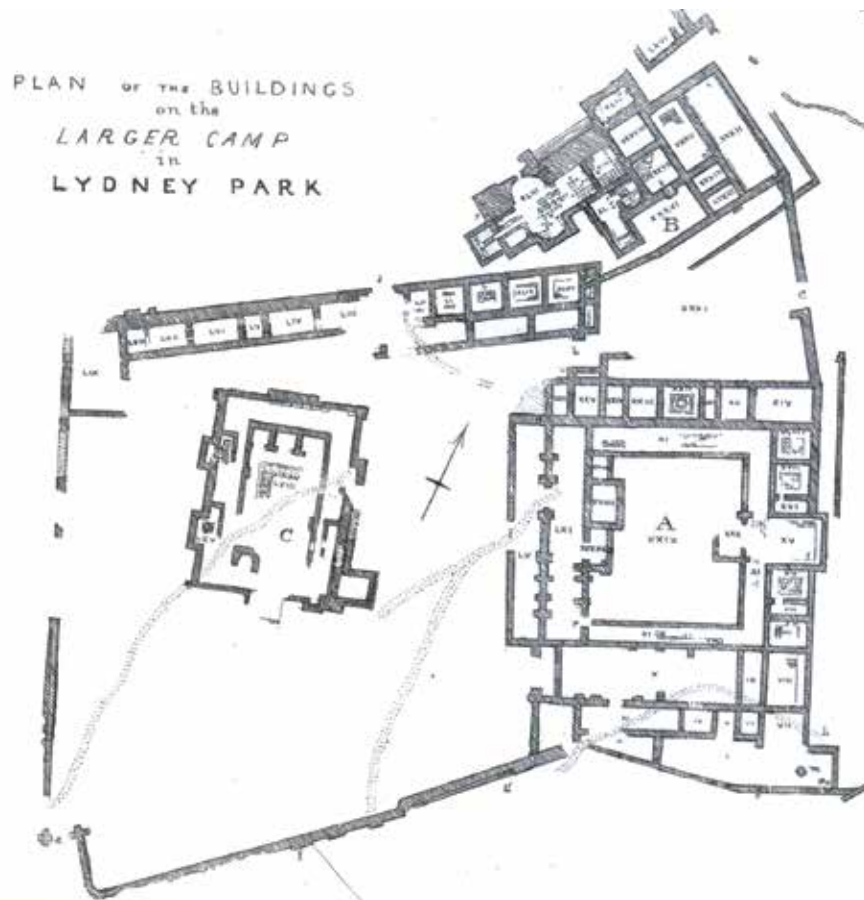


Figure 7: The Temple Complex (as presented by Bathurst)

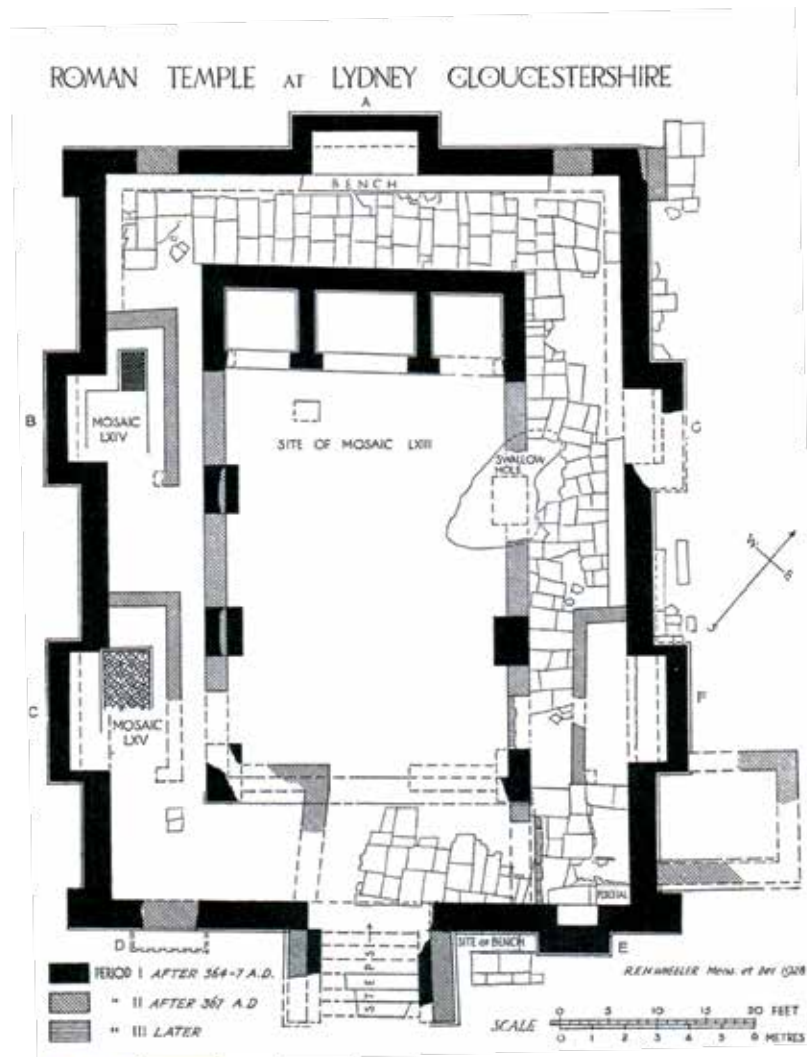


Figure 8: The Temple Plan (as excavated by the Wheelers)



Figure 9: Nodens

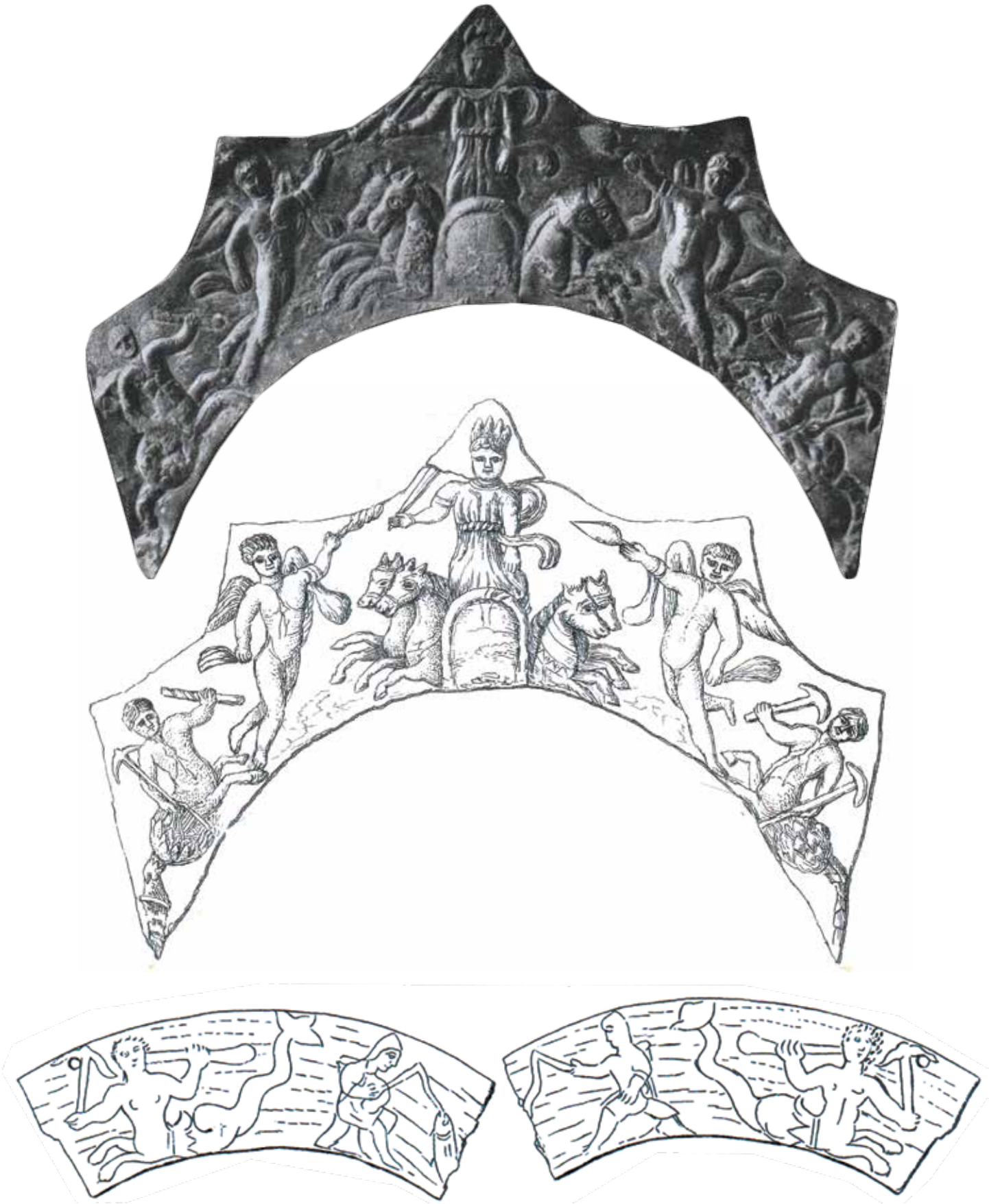


Figure 10: The Great God Nodens



Figure 11: The Lydney Hound

Figure 12: Machen's Inscription

Machen's Inscription:

DEVOMNODENTi
 FLAvIVSSENILISPOSSVIt
 POSSVIT
 PROPTERNVPtias
 quasVIDITSVBVMBra

Machen, divided into words:

DEVO M NODENTi
 FLAvIVS SENILIS POSSVIt
 PROPTER NVPtias
 quas VIDIT SVB VMBra

actual Lydney Park inscriptions:

DEVO NODENTI
 FLAVIVS SENILIS . . . POSSVIT
 — —
 — —

To the great god Nodens (the god of the Great Abyss) Flavius Senilis has erected this pillar on account of the marriage which he saw beneath the shade.



Figure 13: Faun, satyr, or The Great God Pan?